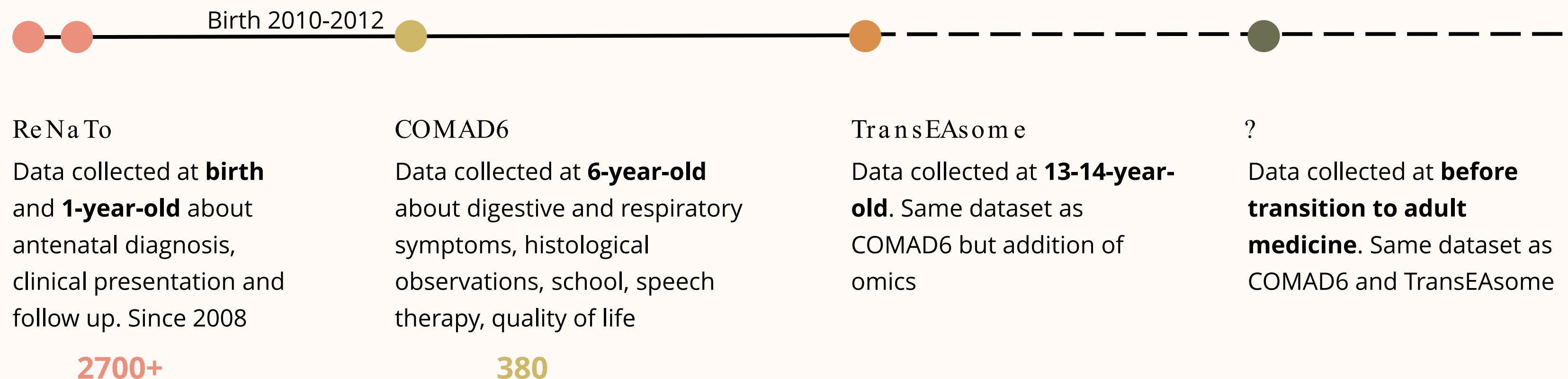


Esophageal Atresia is a long-term disease .

Mélanie Leroy



French registry.

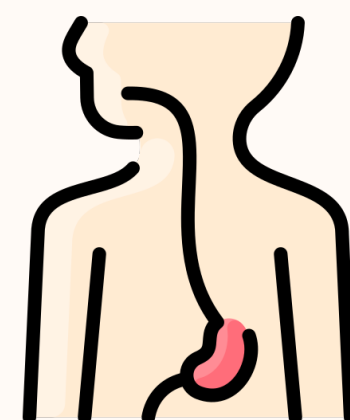


Perinatal results .



Incidence

- 1.8 per 10,000 births in France
Sfeir, 2013



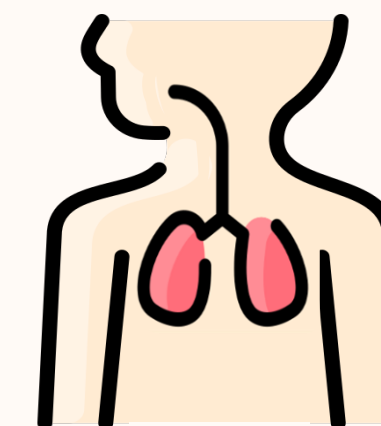
Digestive

- 60% of **GERD** at 18 months, no factors
- 23% anastomotic **stricture** at 1 year
- 15% of **undernourishment** and 19% of **stunting**

Flatrès, 2022

Aumar, 2022

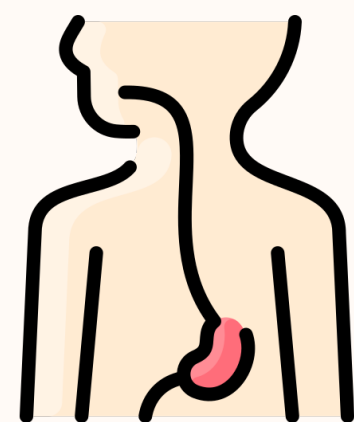
Depoorter, 2022



Respiratory

- 30% of **readmission for respiratory cause** after first discharge
Lejeune, 2021

6-year-old.



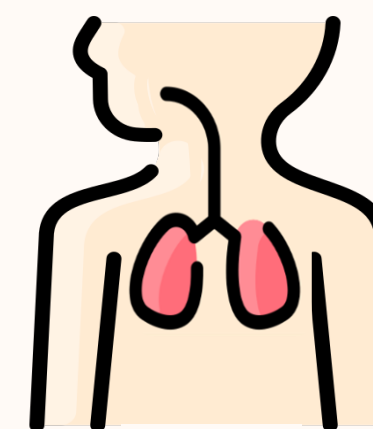
Digestive

- Complications more frequent in **long gap patients**

Bourg, 2022

- 35% had **GERD**

Aumar, unpublished data



Respiratory

- Tracheomalacia more frequent in **long gap patients**

Bourg, 2022

- 23% had recurrent chest infections

Lejeune, unpublished data

Analysis of the dataset is ongoing

13-14-year-old

TransFAsome

Long term outcome of esophageal atresia:
transomics profiles in adolescence



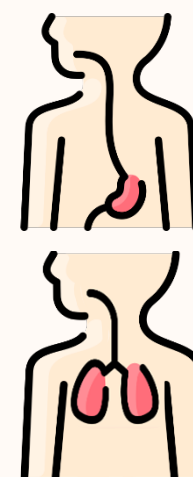
Health status 13-14 years

Medical history
between 6 and 13-14 years

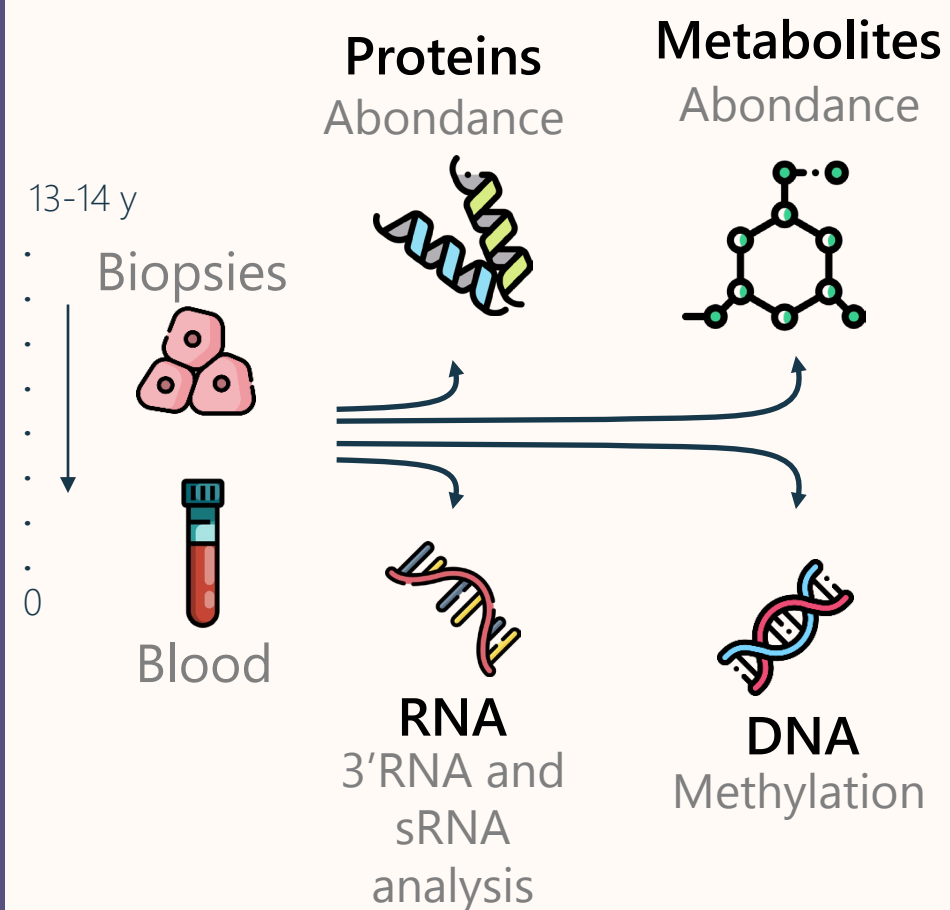
Digestive
Dysphagia
GERD ...

Respiratory
Cough
Asthma
Stridor ...

Nutrition
Neuro orthopédique
Speech therapy
Education
Quality of life



Omics profiles

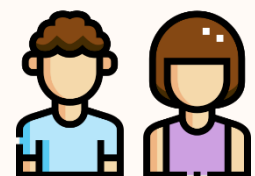


13 - 14 - y e a r s - o l d ●

Co constructed ●



Parents' committee



Patients' committee
Teenagers experts in clinical research committee

Schedule ●

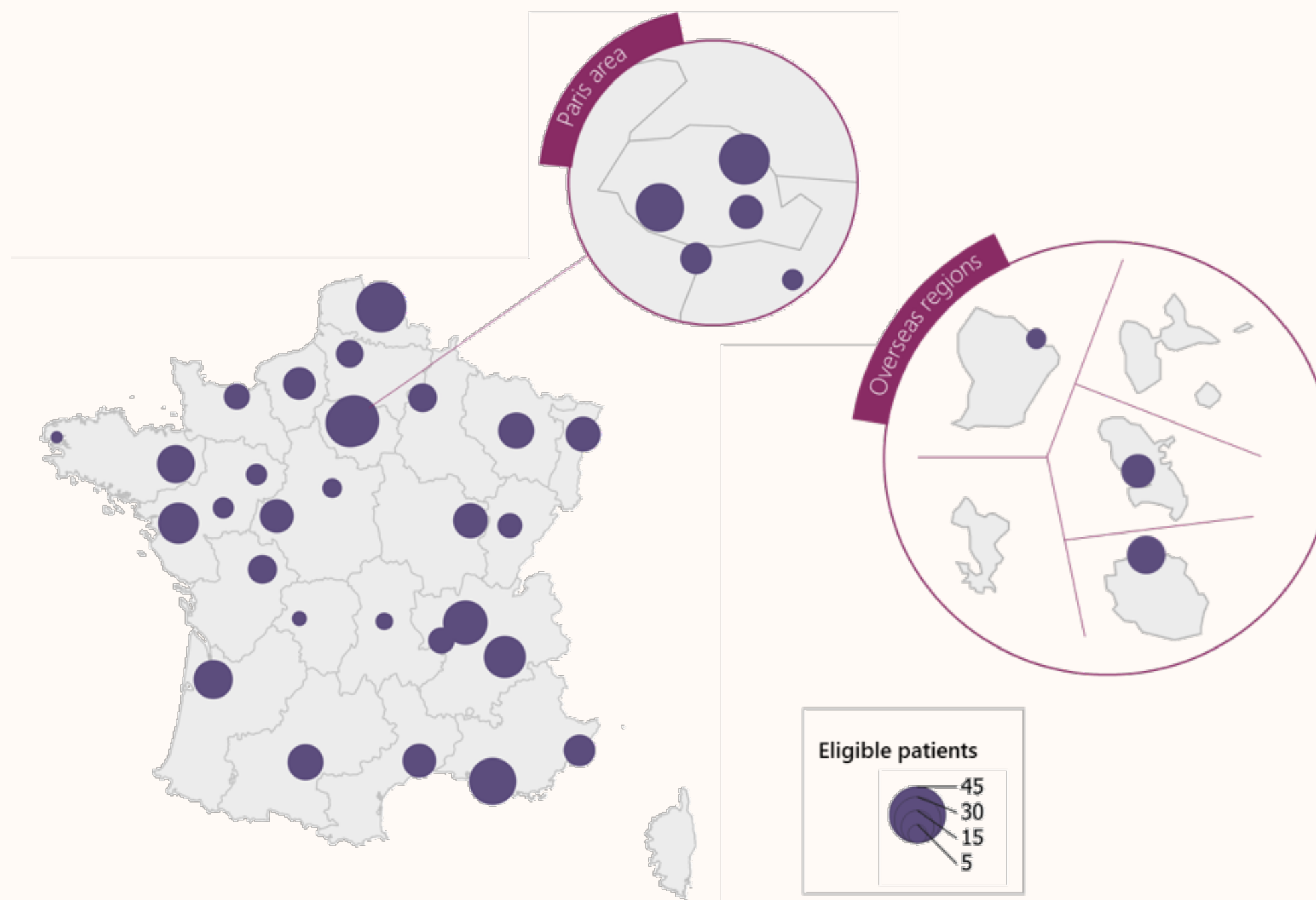
Start of the project: March 2022

Start of the inclusion: August 2024

End of the inclusion: May 2026

Analysis: 2026 - 2028

13-14-year-olds



300 patients
150 controls

13 - 14 - y e a r s - o l d .

Key fact about TransFAsome

31 centers

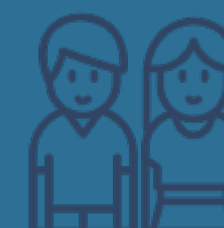
OPEN

22 centers
allowed to
include patients

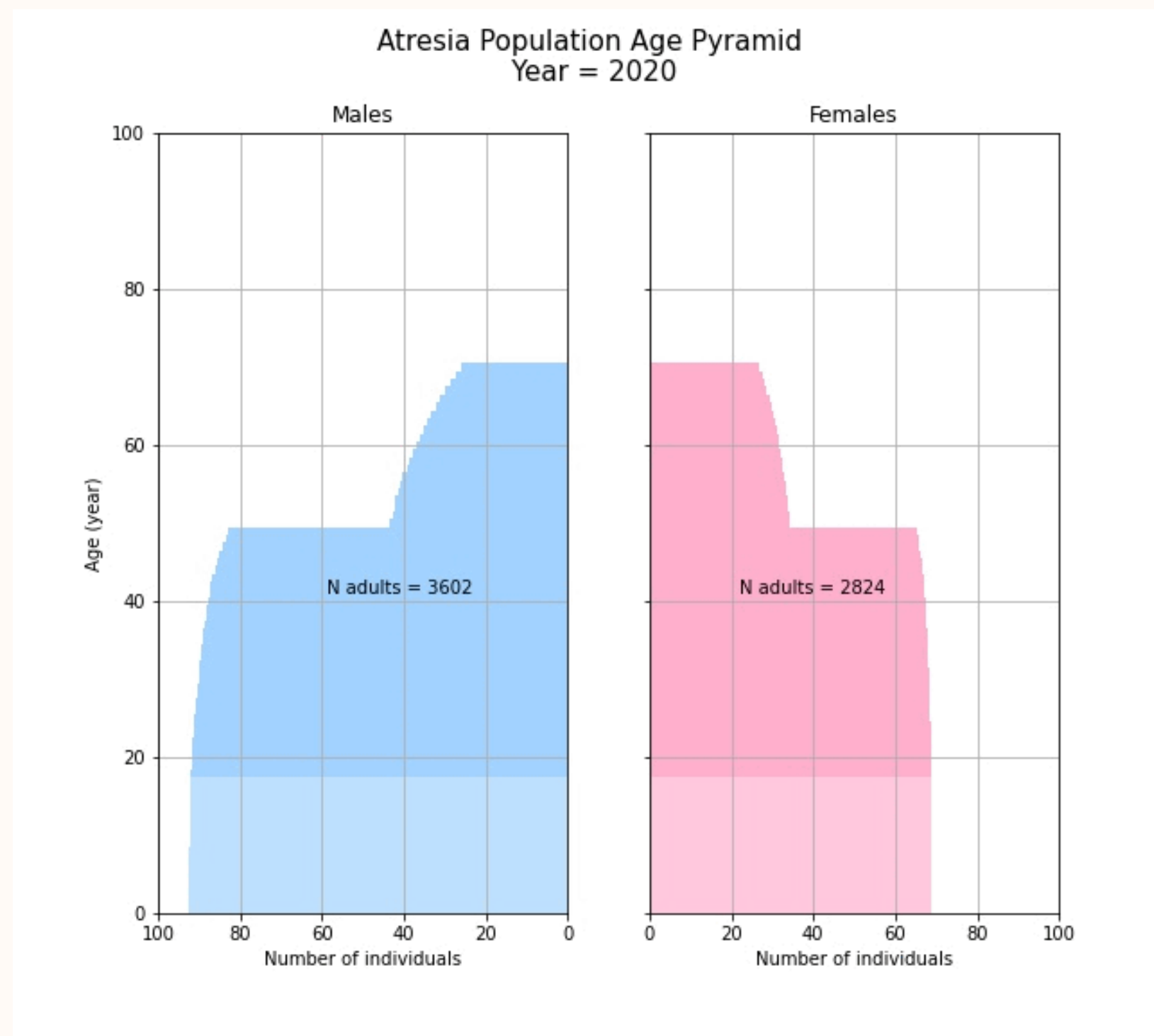
20 patients
included in the
main study

6 patients in the
plasma study

0 controls
included



Adulthood ●



In 2030 ●

7 000+ adults (40 000+ Europe)
530+ over 60

In 2050 ●

1st 100-year-old

Transition to adult medicine ●

In France ●

- Pediatrician up to 15-16-year-old
- Join consultation with the pediatric multidisciplinary team and the adult gastroenterologist at 16
- Follow-up by the adult medicine department every 5 to 10 years

Recommendations ●

nature reviews gastroenterology & hepatology

<https://doi.org/10.1038/s41575-023-00789-w>

Consensus statement

 Check for updates

The International Network on Oesophageal Atresia (INoEA) consensus guidelines on the transition of patients with oesophageal atresia–tracheoesophageal fistula

The team ●



CRAMCO Lille team

Thank you for your
attention !

TranseEAsome website

